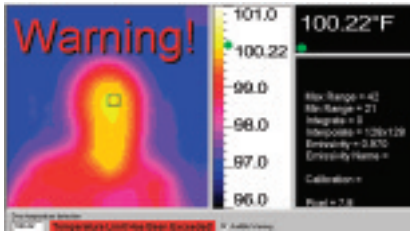


WAHL FEVER ALERT SYSTEMS

Screen for possible fever with the Wahl Low Resolution Thermal Imaging System!

An early warning system to screen people in "real time", the **Wahl HSI2000S & HSI1000S Low Resolution Fever Alert Imaging Systems** quickly and accurately detect elevated body temperatures. In less than a second the Fever Alert will automatically detect the highest temperature in an image, and alert you with both **AUDIBLE** and **VISUAL ALARMS** (through the PC speaker) when the pre-defined threshold is exceeded; indicating possible fever in humans. A Black Body reference is also used to regularly verify the accuracy of the imager.



Affordable and easy to use, the Wahl Fever Alert System is the best choice as part of a prevention plan to screen people or large groups of people, and possibly minimize the spread of flu.



Wahl
HSI1000S



Wahl
HSI2000S

SPECIFICATIONS		
Model Number	HSI1000S Fever Alert	HSI2000S Fever Alert
Temperature Range	32° to 122°F (0° to 50°C)	
Accuracy	±2°C from 68° to 122°F (20° to 50°C) over the environmental temperature operating range of 68° to 95°F (20°C to 35°C) ±5°C, ±5% from 14° to 302°F (-10° to 150°C) over the full environmental temperature operating range of 23° to 122°F (-5 to +50°C)	
Field of View	20° x 20°	
Spectral Response	8 µm to 14 µm	
Temperature Sensitivity	~ 0.5°C @ 30°C	
Temperature Readout	All 256 pixels via RS232	
Detector	16 x 16 pixel array	
Frame Rate	8 Hz	
Interface	RS232 (2m Cable standard)	
Imager Power Supply	12 VDC @ 300mA	
Operating Temperature	23° to 122°F (-5° to +50°C)	
Storage Temperature	-4° to 176°F (-20° to +80°C)	
Humidity	10% to 100% non condensing	
CE	Yes, complies with EMC directive	
Housing	Impact Resistant Plastic	Die-cast Aluminum
Mounting	Mounting brackets supplied	
Dimensions	4.72 x 4.92 x 3.14 inches (120 x 125 x 80 mm)	3.93 x 4.33 x 2.36 inches (100mm x 110mm x 60mm)
Weight	21 ounces (≤0.6kg)	25 ounces (≤0.7kg)
Included in Shipping	Connection Cable for RS232 and Power, 12V Power Supply	
Computer Requirements	IBM compatible PC with a minimum of 32 Mb Ram; 300 MHz Processor; Windows 98, NT, or 2000; RS232 Serial Port (115K Band); 24 bit color graphic capability.	

Specifications subject to change without notice.
Always verify human temperature with a medical thermometer.

HSI2000S Features

- 3 Display Palettes: Ironbow, Rainbow and Grayscale
- Readout in °F or °C
- HSI1000S - impact resistant plastic
HSI2000S - die-cast aluminum
- Offset control (range) and Emissivity values
- User selectable sensitivity settings
- Image integration from 1 to 10 frames
- Less than a second to take a temperature reading, thus no delay processing people past the system
- Non-threatening - Non-contact:
 - Measures the temperature coming off a surface - no contact with subject
 - No lasers are used
- Black Body verifies the accuracy of the imager

**Backed by Palmer Wahl's
Service and Warranty!**



Calibration Services Available

PALMER Wahl
INSTRUMENTATION GROUP
Continuous Innovation Since 1836
ISO9001:2000 CERTIFIED

(800) 421-2853 • FAX (828) 658-0728 • www.palmerwahl.com

08/09 Rev B