

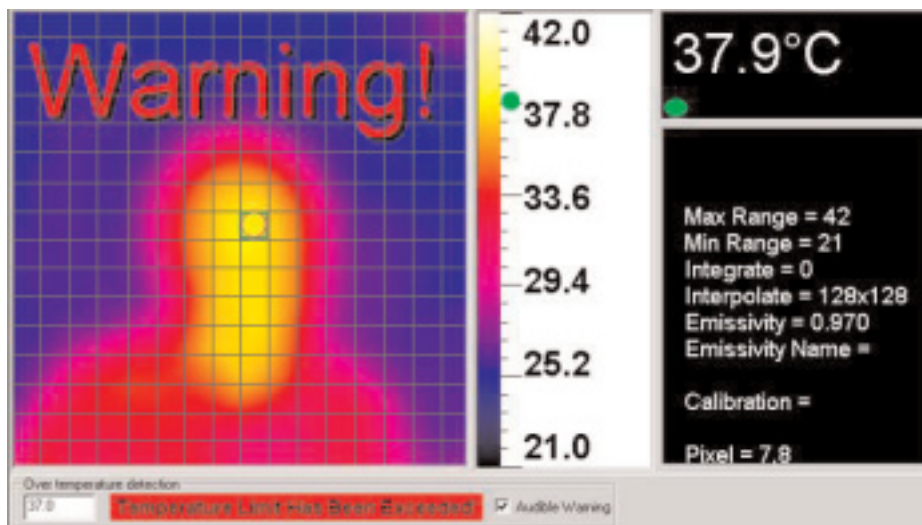


FEVER ALERT Imaging System

with Visual and Audible Alarms

The New Wahl FEVER ALERT Imaging System can be used to help screen affected people in both the workplace and public venue's. Companies, health departments and other government agencies would all benefit from the FEVER ALERT System to minimize the spread of influenza.

The lowest priced thermal imaging camera on the market, the FEVER ALERT Imaging System offers a solution for early warning in the detection of elevated temperatures in people, aiding in the protection of the population.



The FEVER ALERT Imager provides real time image and temperature monitoring of 256 data points, with both **VISUAL** and **AUDIBLE ALARMS**, (through the PC speaker) alerting you if the pre-defined threshold is exceeded. The picture above uses a simulated grid over the thermal picture of the person being measured demonstrating how the 256 temperature pixels work. The highest temperature detected is automatically highlighted in green, indicating that the set temperature limit of 37°C has been exceeded, implying a potential fever in the subject. (Unit can also be set for °F)

The FEVER ALERT offers user selectable sensitivity settings, offset control (range), emissivity values, and image integration from 1 to 10 frames. Other features include: display palettes are selectable in iron-bow, rainbow and grayscale. Readout in °C, or °F.

FEVER ALERT Imager Specifications	
Model Number	HSI2000S
Temperature Range	14° to 302°F (-10° to 150°C)
Accuracy	±2°C from +20°C to +50°C (over the environmental temperature operating range +20°C to +35°C) ±5°C ± 5% from -10°C to +150°C (over the full environmental temperature operating range of -5°C to +50°C)
Field of View (FOV)	20° x 20°
Spectral Response	8 to 14 microns
Temperature Sensitivity	-0.5°C @30°C
Temperature Readout	All 256 pixels via RS232
Detector	16 x 16 pixel array
Frame Rate	8 Hz
Interface	RS232 (2m Cable standard)
Imager Power Supply	12 V DC @ 300mA
Temperature Operating Range	-5°C to +50°C
Temperature Storage Range	-20°C to +80°C
Humidity	10% to 100% non condensing
CE	Yes, complies with EMC directive
Housing	Die-cast Aluminum
Dimensions	3.93 x 4.33 x 2.36 inches (100 x 110 x 60 mm)
Weight	25 ounces (≤ 0.7kg)
Mounting	Mounting Brackets supplied
Included in Shipping	Connection Cable for RS232 and Power, and 12V Power Supply
Computer Requirements	IBM compatible PC, the following minimum specifications are required: 32 Mb RAM; 300 MHz Processor; MS Windows 98, NT, 2000; RS232 Serial Port (115K Band); 24 bit color graphics capability.



FEVER ALERT IMAGING SYSTEM

- The background should be at a stable fixed temperature.
- The person to be checked must be in the field of view.
- The person to be checked should be in close proximity to the imager.

