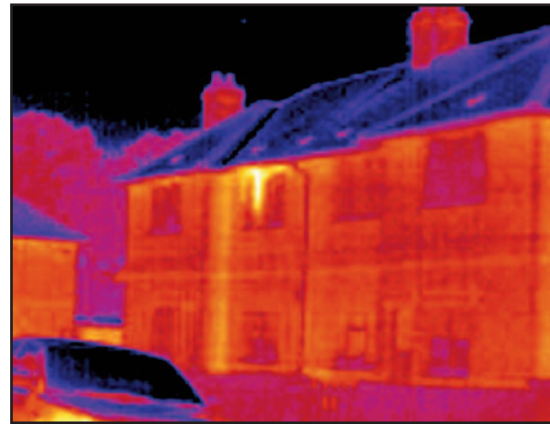
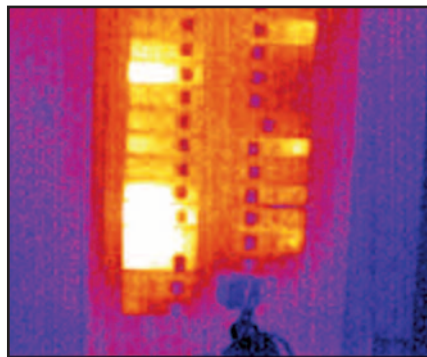


Wahl's **NEW** Heat Spy® HSI3000B Camera for Building Inspections

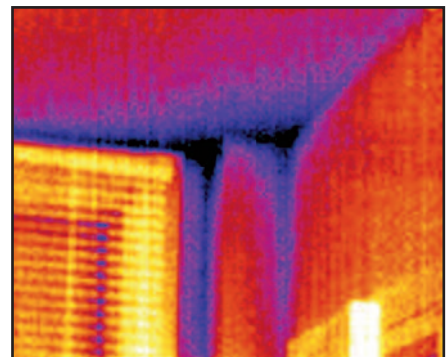


Detect insulation voids in buildings.

Easily detect problems with new increased sensitivity and reduced temperature range!



Find possible dangers such as overheated circuit breakers.



Detect heat loss from improperly insulated windows or doors.

FEATURES OF THE NEW HSI3000B CAMERA

- Highest thermal sensitivity (NETD $\leq 50\text{mK}$) in its price range.
- Best screen resolution (160 x 120) in its class. Image details are shown clearly and precisely on the large, bright, 3-1/2" screen.
- Adjustable emissivity for maximum accuracy.
- ON BOARD dual cursors, moveable anywhere on the image. Automatically seek hot & cold spots.
- Fully radiometric - capture detailed, high quality images for LIVE analysis of any of 19,200 pixels in the entire image.
- Portable, with long life rechargeable battery.
- Proprietary reporting software (included) documents all of your work quickly and easily.
- Easy Report software for quick image analysis.
- Store over 1,000 images on included SD Card.
- Download images directly to PC via USB port or SD card.
- Rugged, lightweight, and comfortable to use for any application.

APPLICATIONS

- ▶ Building Envelope
- ▶ Building Surveying
- ▶ Commercial Refrigeration
- ▶ Condition Monitoring
- ▶ Electrical
- ▶ Energy Loss
- ▶ Insect Infestation
- ▶ Insulation
- ▶ Mold Issues
- ▶ Plumbing
- ▶ Roofing



Calibration Services Available

NEW! WAHL Heat Spy® HSI3000B SERIES SPECIFICATIONS

Application	BUILDING INSPECTION
Measurement Range	-4° to 257°F (-20° to 125°C)
Field of View	20° x 15°
Focus	Manual Focus with 2X Digital Zoom
Minimum Focus	11.81" (30cm)
Spectral Response	8 μm to 14 μm
Thermal Sensitivity	NETD ≤ 50 mK (0.05°C) @ 23°C ambient and 30°C Scene Temperature
Frame Rate	9 Hz Frame Rate
Detector	Advanced high resolution 160 x 120 detector with 19,200 pixels
Image Storage	Over 1,000 images on supplied SD Card (or MMC) Multiple image storage and retrieval at full digital resolution. Image browser with full image adjustment.
Accuracy	The greater of ± 2°C or ± 2% of reading in °C
Display	3-1/2" Color LCD and LED Backlight with high resolution images, show images clearly and precisely.
Color Palettes	4 Color Palettes: Rainbow, Ironbow, High Contrast, and Grayscale
Laser Pointer	Trigger activated Class II Laser to highlight the center of the imaged area
Radiometry	Dual moveable temperature measurement cursors, with auto seek on the hottest and coldest points. Delta temperature measurement.
Emissivity Correction	User selectable 0.2 to 1.0 in steps of 0.01 with reflected ambient temperature compensation.
Ambient Operating Range	5° to 113°F (-15° to +50°C)
Storage Range	-4° to 158°F (-20° to +70°C)
Readout	°C, °F or K
IP Rating	IP42
MIL SPECS	MIL-PRF-288-F Class 2. Vibration: Section 4.5.5.3.1. Shock: Section 4.5.5.4.1. Drop: Section 4.5.5.4.2
Humidity	10% to 90% non-condensing
Power	Field rechargeable, replaceable, high capacity, Lithium-ion batteries with up to 6 hrs continuous operation, AC Adapter included. Battery charge indicator.
Settings and Controls	ON/OFF soft power control; user selectable, and auto adjustable span and level control.
Interfaces	USB Type B
Housing	Impact Resistant Plastic with Protective Rubber Boot and Wrist Strap
Dimensions	9.05 x 4.72 x 4.33 inches (230mm x 120mm x 110mm)
Weight (with Battery)	approx. 1.65 lbs (0.75kg)
Mounting	Hand Held & Tripod Mounting
Included Accessories	Easy Report & Report Writer Software, Rubber Boot, Carrying Case, Wrist Strap, Rechargeable Battery, AC Adapter, Car Charger, User Manual and Image Analysis Software CD, USB Cable, SD Card, and SD Card Reader.
Optional Accessories	Desktop Charger, Car Charger, Magnifying Eye Piece/Sun Shade, Rubber Boot, and additional Rechargeable Battery. Also, Portable Calibration Black Body

Specifications subject to change without notice.

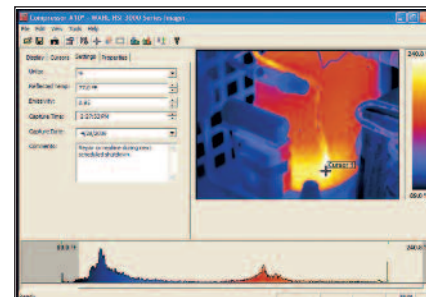
HeatSpy® is a registered trademark of Wahl Instruments, Inc.

Wahl Image Analysis Software

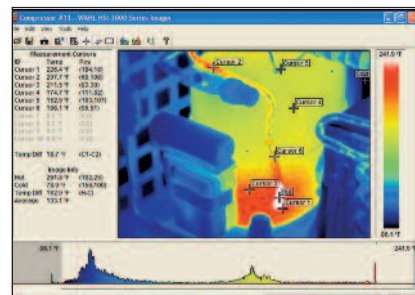
- **Download and View images**
- **Enhance image details**
- **Perform accurate detailed temperature analysis**
- **Add comments**

Wahl Heat Spy® HSI3000B Series Thermal Imagers include easy to use Heat Spy® image analysis software, which allows the user to manipulate, analyze, and store thermal images. Image parameters can be changed or corrected even after downloading.

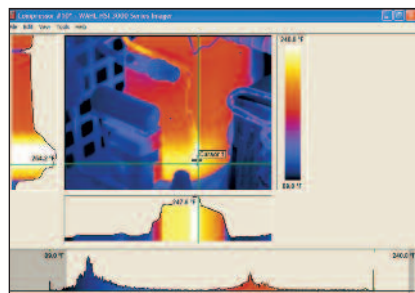
No other software package can do this!



Add comments to the image: select either °F, °C or °K; adjust the target object emissivity; adjust span and range temperature scale settings.



Placing measurement cursors anywhere in the image creates a list that includes the spot measurement, pixel position, and the difference between measurement cursors 1 and 2. Also displays the hottest and coldest measurements in the scene, their difference, and the average.



2D profile displays a graphical representation of the temperature values along the selectable vertical and horizontal lines.

Calibration Services Available