



## z50 INSPECTOR

- designed for the professional required to document and prepare reports with ease, including thermal and digital images.

## z30 DETECTOR

- designed for maintenance inspections not requiring a report. The z30 can also be transformed into an Inspector at any time!

Upgrade both models with High Temperature, Wide Angle Lens and/or Telephoto Lens options - at any time!

"z" speed at 30 Hertz captures clear, sharp images! (USA Customers only)

**First Camera Upgradeable AFTER Purchase!** Buy one Heat Spy and upgrade your camera with up to 15 configurations when you are ready!

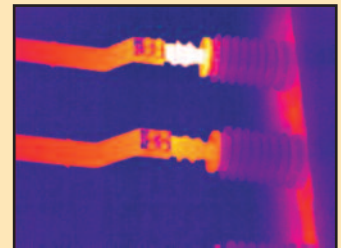
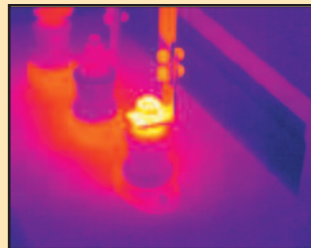
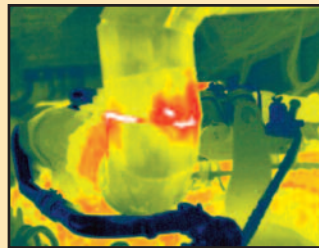
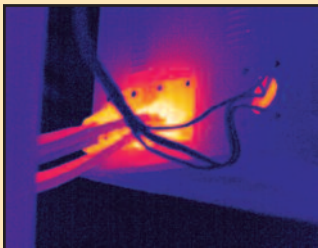
**First Upgradeable Camera in the Field!** Easily convert your Detector to an Inspector!

**First Upgradeable Camera in the Field** to a High Temperature Range!

**First Extended Warranty Plan** that warrants the entire camera - not just part of it!

**First Annual Recalibration & Inspection Service** to comply with ISO 9001 requirements, with the purchase of an Extended warranty!

**Every Pixel is individually calibrated!**



**See the difference! Double Vision feature** takes a Thermal and Digital picture at the same time, and can include up to a 45 second voice recording.

**Lease the camera at 0% interest** (Call Customer Service for requirements, USA Customers only)

Optional flash light brightens your nights so you can take digital pictures, and operates on it's own separate battery enabling longer camera battery life.

Camera acclimates quickly, meaning sudden ambient temperature changes won't slow you down!

We are so confident that you will love this new camera that we are offering a 48 hour money back guarantee! (USA Customers only)

Call us now! You could win a Free Heat Spy, upgrade or accessory!



**Buy it, you'll like it; 48 hour  
Money Back Guarantee\***

\* USA Customers only

APPLICATIONS for all Industries
Aerospace
Automotive
Asphalt & Roofing
Breweries
Beverage Processing
Canning
Chemical
Coal & Mineral Mining
Condition Monitoring
Confectionery
Cosmetics
Dairy Processing
Electrical
Energy Audits
Facilities Management
Fire Fighting
Food Processing
Food Service
Glass
Government
Home Inspection
HVAC & Irrigation
Meat Processing
Mechanical
Military
Natural Gas
Oil & Petroleum
Petrochemical
Pharmaceutical
Pipe, Valve & Fitting
Plumbing
Police Search/Rescue
Poultry Processing
Power Generation
Pulp & Paper
Research & Development
Plastics
Rubber
Sanitary Processing
Semiconductor
Steel & Iron
Telecommunications
Test & Measurement
Verification
Water & Wastewater
Weatherization

Specifications	z30 Series Detector	z50 Series Inspector
UPGRADE Model	Upgrade to a z50 Inspector - in the Field!	
Measurement Range	-4° to 356°F (-20° to 180°C)	
UPGRADE to High Temperature	212° to 1112°F (100° to 600°C) (User Upgradeable in the Field)	
Temperature Accuracy	Greater of ± 2% of reading or ± 2°C	
Temperature Scale	User Selectable °C, °F, and K	
Temperature Cursors	1 Hot Seeking, 1 Cold Seeking, 2 Adjustable	
Field of View	17.5° x 13°	
Resolution/Pixel Size	160 X 120	
Spectral Range	8-14µm	
Thermal Sensitivity	0.1°C @ 30°C	
LCD Display	High Resolution 3.5" Color LCD, 640 x 480	
Digital Zoom	2 X Zoom	
Frame Rate	30 Hz (USA only) (9Hz Models a30 and a50, International)	
Display Color Palettes	<b>4 Color Palettes:</b> Ironbow; Negative Grayscale; Rainbow Blue-Red; High Contrast Blue-Yellow	<b>11 Color Palettes:</b> Ironbow; Negative Grayscale; Positive Grayscale; Amber; Hot Metal; Cool Metal; Rainbow Green-Red; Rainbow Blue-Red; Rainbow Black-White; High Contrast Blue-Yellow; and High Contrast Violet-White
Image Adjustment	Auto Ranging / Manual Level and Span / Adjustable Display Brightness Control	
Languages	<b>11 Languages:</b> English; Spanish; French; German; Italian; Portuguese; Korean; Japanese; Russian; Simplified Chinese; and Traditional Chinese	
Laser Pointer	Class 2 < 1mW / 635nm, Red	
Self Calibration	Auto Calibration with Adjustable Time Interval or Push Button Manual	
Measurement Mode	Spots, Delta T	Spots, Areas, Lines, Isotherms, Delta T
Number of Measurement Areas	N/A	3
Emissivity Range	Adjustable from 0.01 to 1.00	Adjustable from 0.01 to 1.00 with Built-in Emissivity Table
T Reflect	Manual Adjustment	
T Correct	N/A	Manual Adjustment
Digital Camera	N/A	1.3 Megapixel
Thermal/Digital Image	N/A	Toggle between Thermal and Digital
Alarm	High Temperature Audible and Visible Alarm	High Temperature Audible and Visible Alarm Isotherm Visible Alarm
UPGRADE Optics	Wide Angle (35° x 26° FOV), and/or Telephoto (8.75° x 6.5° FOV) (Factory Upgradeable options)	
Report Analysis Software	N/A	Yes
Image Storage	N/A	2GB SD / Time Stamped
Freeze Frame/Save Image	Freeze Frame only	Freeze Frame and Save Image, Thermal and/or Digital to SD Card
Storage Mode	N/A	Manual Single Image Save or Programmable Auto Save to SD Card
Voice Annotation	N/A	Maximum 45s per image
File Format (Thermal)	N/A	JPG plus Temperature in 14 bit data
File Format (Visual)	N/A	JPG
Video Output	User Selectable PAL and NTSC	
Dimensions / Weight (w/o battery)	Width: 4.5 in. (115mm) x Length: 5.9 in. (150mm) x Height: 9 in. (230mm) / 1.65 lbs	
Power / Operating Time	1 Rechargeable Lithium ion Battery / 2 Batteries provide 6.0 plus hours operation	
Charging System	External AC Mains Battery Charger included; In Camera Charging with optional AC Battery Charger	
Ambient Operating Temperature	5° to 122°F (-15° to 50°C)	
Storage Temperature	-4° to 140°F (-20° to 60°C)	
Humidity	≤ 90% non-condensing	
Included Accessories	Carrying Case; Wrist Strap; Lens Cap; 2 Rechargeable Lithium Ion Batteries; Video Out Cable; AC Mains Battery Charger; Report & Analysis Software; User Manual; SD Card; and SD Card Reader.	
Optional Accessories	Hands Free Flashlight; Auxillary Charging Pkg includes: Car Charger, AC mains charger, and International Plugs	

**IP54**

TWO YEAR WARRANTY

TRACEABLE TO NIST

HeatSpy® is a registered trademark of Wahl Instruments, Inc. Specifications subject to change without notice